

# Hannah Service Guide

Honoring loss & disappointment in  
infertility, pregnancy loss, infant  
loss, and medical diagnoses that  
prevent pregnancies.







# What is a Hannah Service?

A Hannah Service is a time created to meet together with other women who have experienced the affects of infertility, pregnancy loss, infant loss, and medial diagnoses that prevent pregnancies and lament, memorialize, and experience comradery with those who share these experiences.

A Hannah Service can occur anytime of year.  
The calendar can be your guide in selecting a date.  
Suggested times of year could be:

**Mother's Day**

**The weekend or day before Mother's Day**

**Pregnancy and Infant Loss Remembrance Day, October 15**

**Infertility Awareness Week in April**

**Women's Camp weekends**



# How to create a Hannah Service

There are many women in the Bible who we can look to that have experienced disappointment and loss:

Hannah, Hagar, Esther, Anna, Sarah,  
Leah, Mary, and Bathsheba.

Their stories are shared in the Bible and that reminds us that our stories are worthy of being heard and seen.

On the following pages we'll share an outline, program ideas, prayers, a playlist, pictures, and other elements.

Please begin this process by asking God to lead you, give you wisdom, discernment, and sensitivity.



# How to create a Hannah Service

As the women enter have a table with an inviting display. We chose pre-lite faux birch trees as the display and provided pink and blue cut out hearts with looped ribbon. They were invited to take as many as they needed and they could write their name, their baby's name, or "Baby Last Name", the year of loss, or the year they began "trying", or any message that would be meaningful to them. And once they participated they could find a seat.

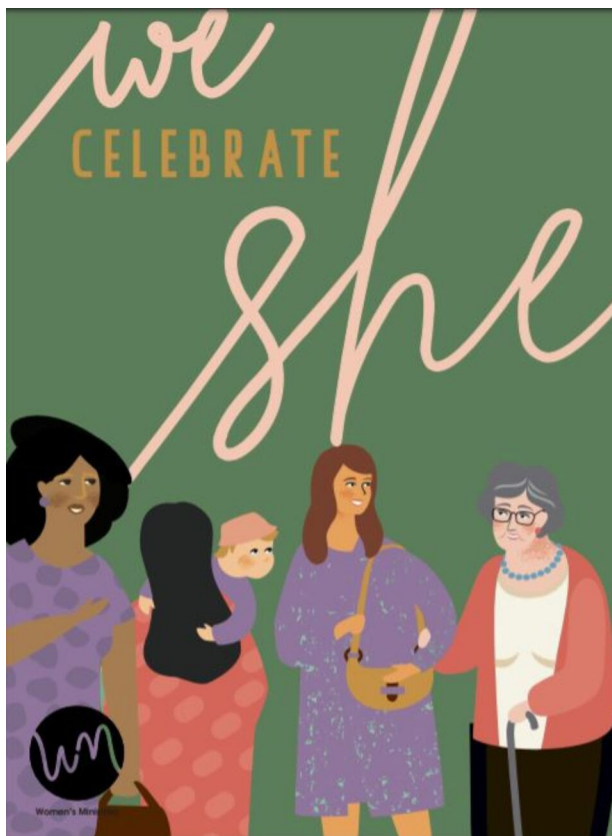
We suggest no overhead lighting, only soft accent lights throughout.



# How to create a Hannah Service

On the table we also provided the cards pictured and linked below for them to take home.

<https://bit.ly/2XNki6w>



## REMEMBRANCE

FOR THOSE YOU HAVE LOVED, HOPED FOR AND LOST.  
MAY GOD COMFORT YOU, IN THE MANNER OF

*Hannah + Hagar.  
Esther. Anna. Sarah.  
Leah + Mary + Bathsheba.*





# How to create a Hannah Service

Possible outline:

Welcome – (2-3 min)

Prayer – (1-2 min)

Liturgy / Responsive Reading (3 min)

Song "It is Well" Bethel Music Version – (4 min)

Sharing circles (35 min, playlist playing in background)

Song 3 "It is Well" Bethel Music Version – (4 min)

Pinwheel instructions – (2 min)

Recited prayer from Of Womb and Tomb – (2 min)

Welcome text:

A Hannah Service is a gathering time and space for women who have experienced infertility, pregnancy loss, infant loss, and medical diagnoses that prevent future pregnancies. These experiences are to be grieved and lamented over. Yet, we are rarely given spaces to memorialize these losses. Come to mourn, pray, sing, and find hope again.



# How to create a Hannah Service

Infertility, Miscarriage, and Infant Loss Liturgy  
written by Courtney Rose conducted as a responsive reading.

Leader: God you are like a mother hen who draws her chicks close  
to her side.

You protect them with your wing.  
You provide safety, protection, and warmth.

Response: It is in the safety of your wing that we expose ourselves  
to you.

We bear our wounds that need continued healing.  
We show our hard-earned scars.

L: God you are the rock that bore us.  
You are steadfast and strong.  
Your will is for life, yet your ways are mysterious.

R: I don't understand your plan for my life.  
I don't know why things have turned out this way.  
Give me faith to trust in you and your timing.



# How to create a Hannah Service

continued

L: God you are a guiding presence through the wilderness.  
As you traveled alongside the Israelites in the desert,  
You provided direction, comfort, and companionship.

R: You know my intentions and desires.  
You walk alongside me in my joys and sorrows.  
You take my pain upon yourself.

L: God you saw Hagar in the wilderness when she fled during her  
pregnancy.  
You remembered Hannah when she poured herself out before you.  
You heard Leah's cries for a child.  
You grieved for Bathsheba in the loss of her baby.

R: God of Hagar, see me.  
God of Hannah, remember me.  
God of Leah, hear me.  
God of Bathsheba, grieve with me.

Amen.

# How to create a Hannah Service

## Sharing circles

form circles out of chairs, no more than 6 chairs a circle. Provide each chair with a pack of tissues. Passing someone a tissue can be an unconscious and unintended message to "stop crying." We want the women to decide when they want to wipe their tears. Encourage one person to be brave and start by sharing their story of loss or struggle.



Healing prayers to take home or prayer over one another after sharing:

<http://uscwomensministries.com/wp-content/uploads/healing-prayers.pdf>

<http://uscwomensministries.com/wp-content/uploads/healing-prayers-spanish.pdf>





# How to create a Hannah Service

## Pinwheel Visual

One in four women experience pregnancy loss. Depending on your setting, it can be a powerful message to visually display the common experience of this kind of loss. We choose the pinwheel (kits purchased on Etsy) in the recognized colors, blue and pink, of infertility and pregnancy loss, because we could display them in a high traffic area at camp. A small yard sign explaining what they are seeing would be beneficial. Lay the pinwheels out for women to select along with permanent markers so they have the option to write the name, the baby's name and the year of their loss and any other messages or words that will help them commemorate this loss. Instruct the women to begin this activity after the reading and prayer.

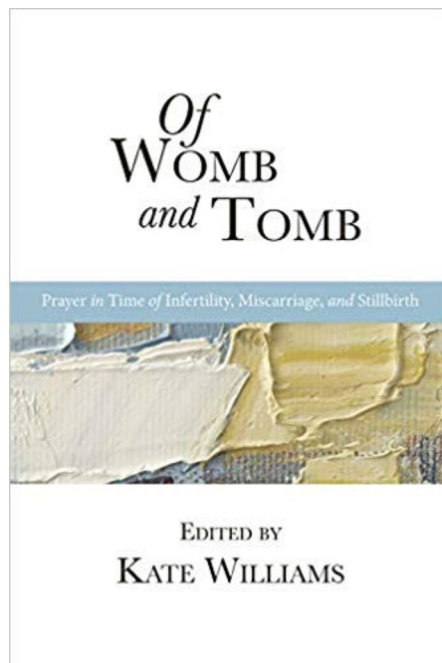
Try to go out together and place them in the dedicated grassy area.



# How to create a Hannah Service

A helpful resource is the book: *of womb and tomb: prayer in time of infertility, miscarriage, and stillbirth* by Kate Williams

A nice way to conclude the service would be to select a reading from the book, recite it and close in prayer.





# How to create a Hannah Service

Playlist Songs  
Appropriate songs that could be played softly  
throughout the service.

